



PROJECT DIGEST WEST JAVA REGIONAL WATER SUPPLY PROJECT SINUMBRA & JATIGEDE

4 – 5 JUNE 2024

Presented by:

Dr. IENDRA SOFYAN S.T. M.T.

Head of Planning and Development Agency
West Java Provincial Government





Sinumbra Regional Water Supply Project



PROJECT BRIEF



Background

Indonesia government aims to provide 100% of housing with safe drinking water and 30% with piped water access. In 2019, safe drinking water access was at 89.27%, with piped water coverage at 22.91%. To address water needs in Metropolitan Bandung Raya, the SPAM Regional Metropolitan Bandung Raya Barat-1 (Sinumbra) project will use water sources from the Sinumbra tea plantation area, with a potential of 3,000 liters/second. This supply will serve Bandung Regency, West Bandung Regency, Cimahi City, and Bandung City, under the West Java Provincial Government's responsibility. Given the numerous priorities, a breakthrough is needed in providing basic infrastructure, with the Public-Private Partnerships (PPP) scheme as a potential solution.

Government Contracting Agency

Governor of West Java

PPP Scheme

PPP Unsolicited
Design – Build – Finance – Operate – Maintenance – Transfer (DBFOMT)

Project Scope

1. Construction of intake system from 3 springs, reservoir, pipeline, and 4 outtakes
2. O&M of all facility
3. Provide the water volume at 1,200 liters/second

Service Coverage

Bandung regency, West Bandung regency, Cimahi city, and Bandung city

Status/Stage

Finalizing feasibility study

Project Cost

USD 49,69 mill

IRR

12.56%

Investment Return Scheme

User tariff (take or pay)

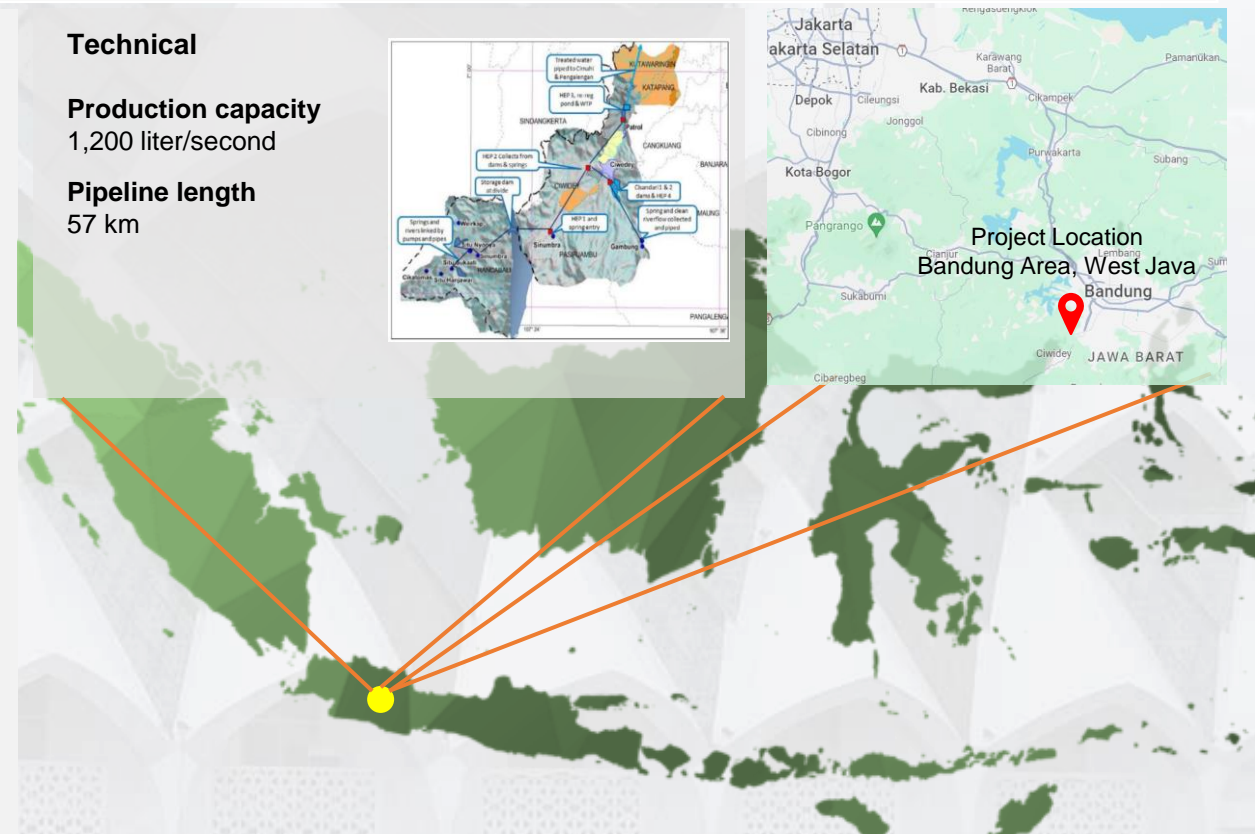
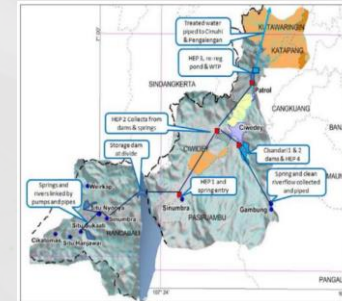
Concession Period

2 years construction and 35 years operation

Technical

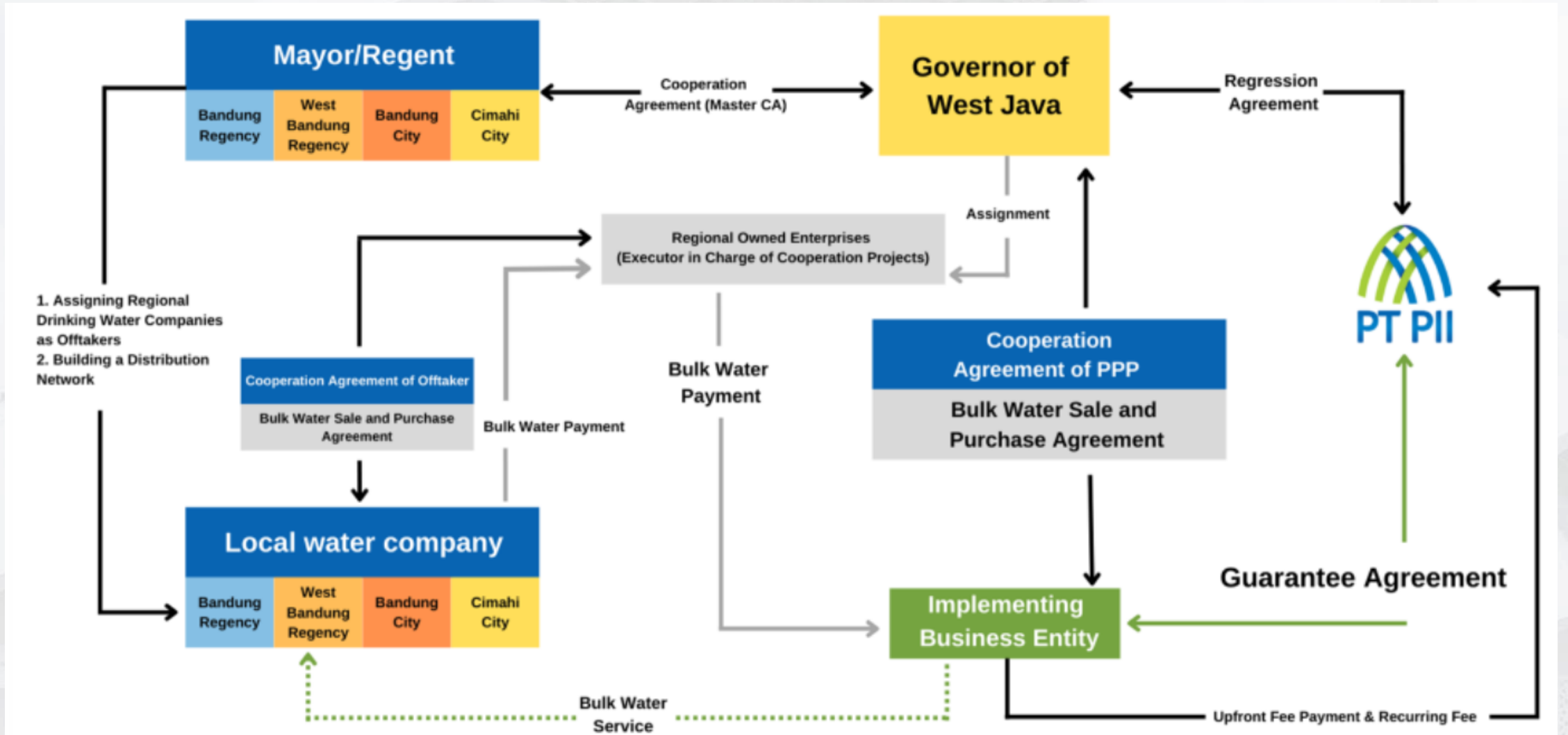
Production capacity
1,200 liter/second

Pipeline length
57 km



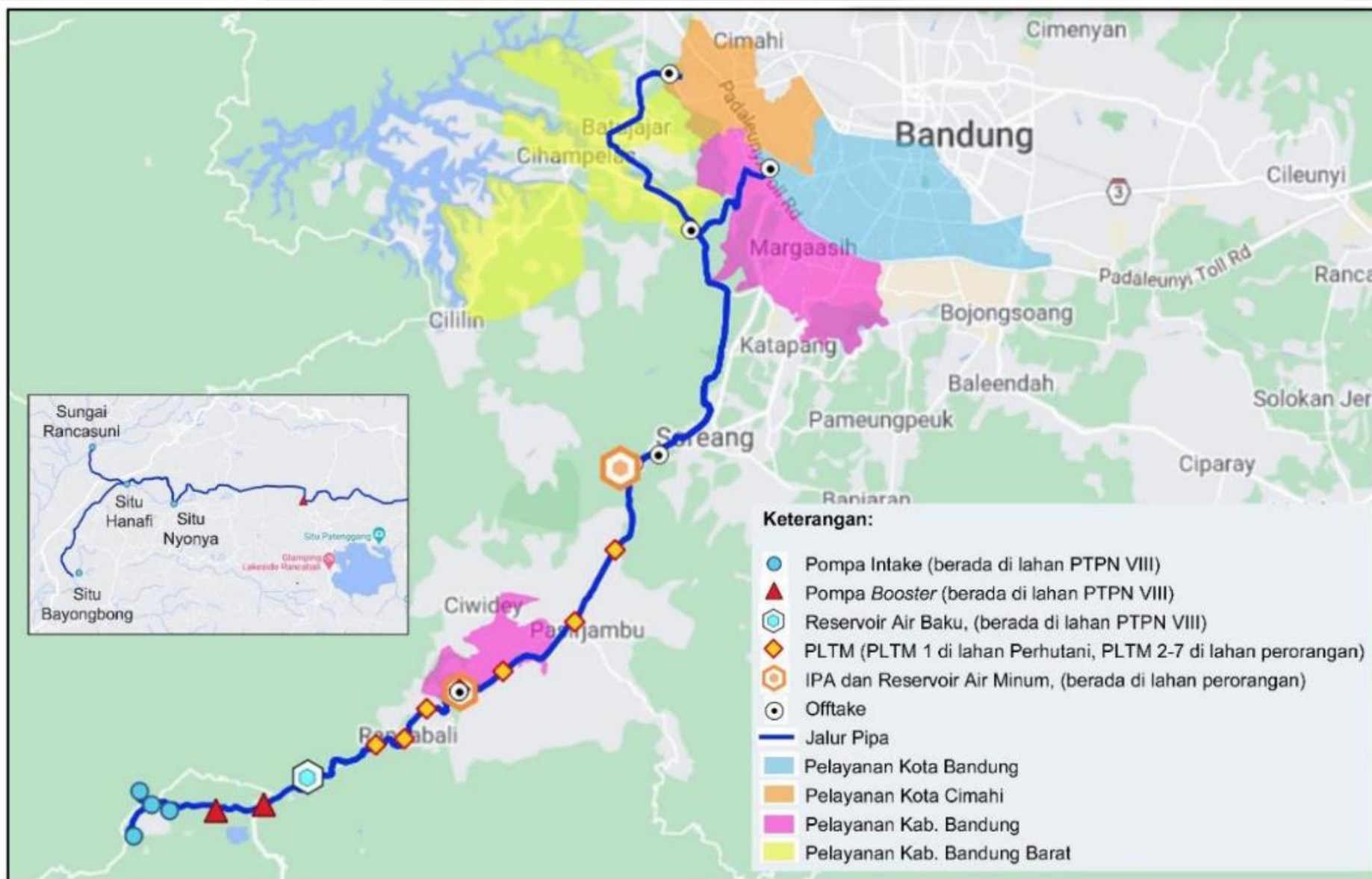


PROJECT STRUCTURE





PROJECT ILLUSTRATION





PROJECT SCOPE

Development

Construction scope:

- a. Intake from springs: 3 intakes
- b. System capacity: 1,250 l/s
- c. Pipeline: 57 KM
- d. Water loss: 50 l/s (3%-4%)
- e. Bulk water sales: 1,200 l/s
- f. Water Treatment Plant: RSF and chlorination with 15 – 20 m/hour filtration speed
- g. Reservoir: Tank, raw water 30,000 m³ and clean water 10,000 m³

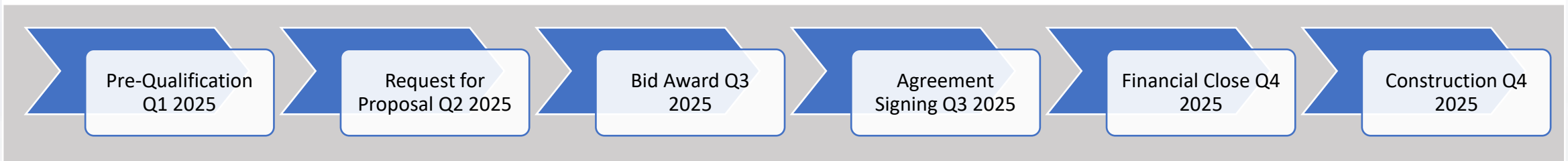
O&M and Transfer

- a. Operation and maintenance of all facility.
- b. Maintain the service quality of the drinking water development system according to the agreed standards.
- c. Transfer of assets and transfer of knowledge at the end of the cooperation period according to PPP Agreement



PROJECT SCHEDULE AND UPDATES

Indicative Project Schedule



Updates

- a. Current status : Finalized FBC and Off-takers agreement
- b. Progress : West Java Provincial Government still discussed with PDAM Off-takers regarding bulk water absorption
Land acquisition on process, Currently in the process of determining new consortium as the initiator.
- c. Obstacles : PDAMs Off-takers must look for financing mechanisms for downstream system development,



Jatigede Regional Water Supply System

PROJECT BRIEF



Background

Description: The Jatigede Water Supply Project is designed to address the growing water demand in West Java by increasing the water supply capacity. The project serves as a water source for five regional areas: Sumedang Regency, Majalengka Regency, Cirebon Regency, Indramayu Regency, and the City of Cirebon. The project aims to provide a drinking water capacity of 2,000 liters per second (lps) at Kadipaten in Majalengka Regency. This increased capacity will ensure a reliable and sufficient water supply to meet the needs of the communities in the respective regions.

Government Contracting Agency

Governor of West Java

PPP Scheme

PPP Solicited

Design – Build – Finance – Operate – Maintenance – Transfer (DBFOMT)

Project Scope

1. Construction of 3 x 500 l/s water treatment plant and 151 KM of pipeline
2. O&M of all facility
3. Provide the water volume at 1,500 liters/second

Service Coverage

Sumedang regency, Majalengka regency, Cirebon sub regency, Inrdamayu regency, and Cirebon city

Status/Stage

Finalizing feasibility study

Project Cost

USD 139,69 mill

IRR

15%

Investment Return Scheme

User tariff (take or pay)

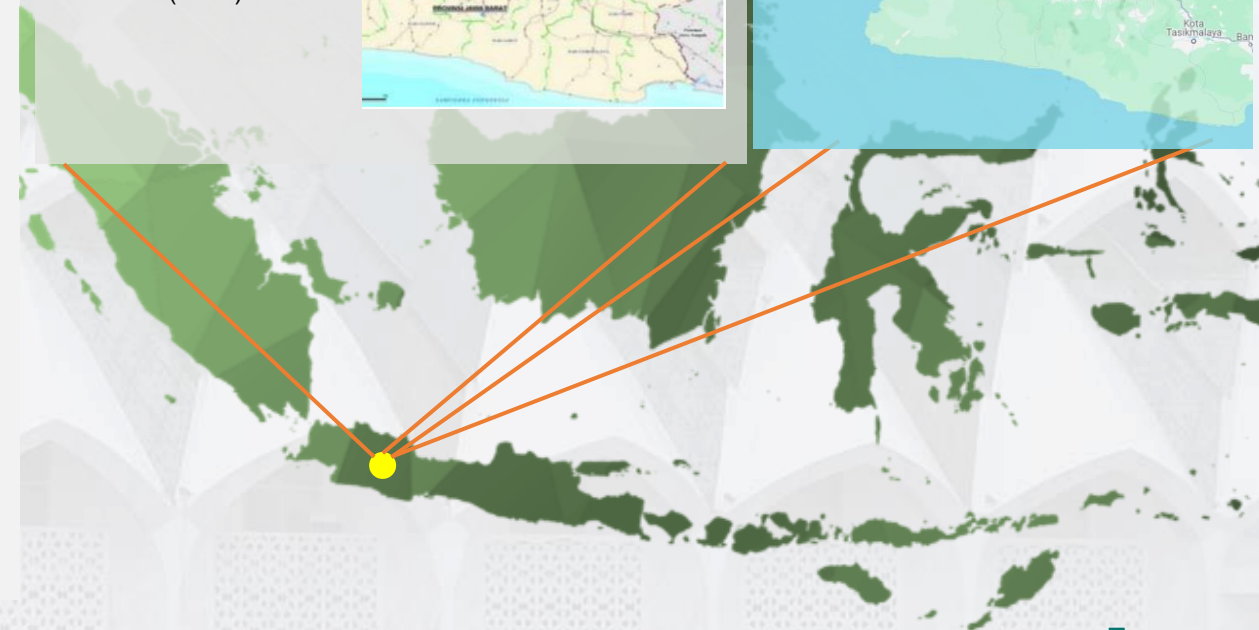
Concession Period

30 years

Technical

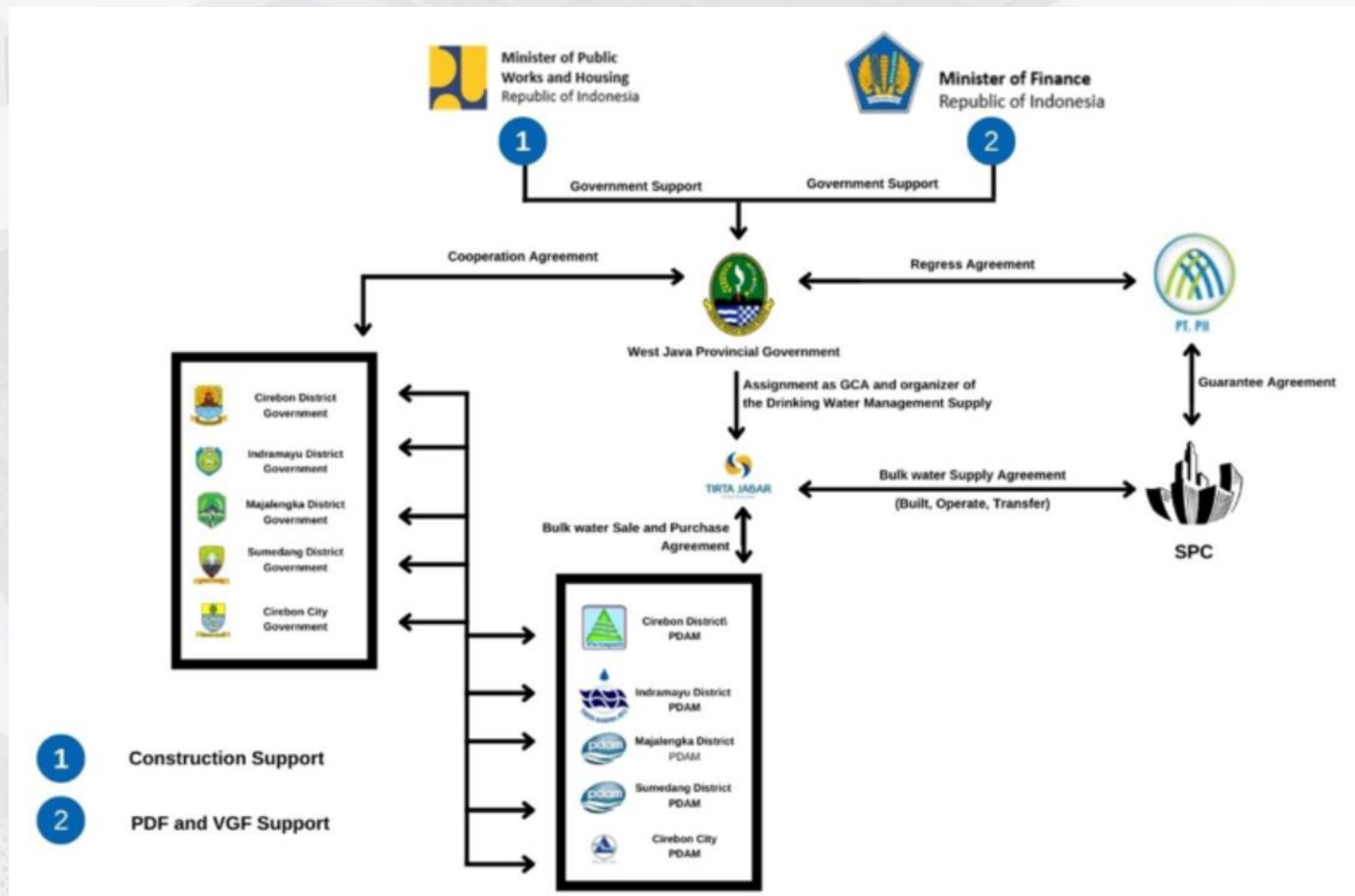
Production capacity
1,500 liter/second

Pipeline length
151 KM (main)

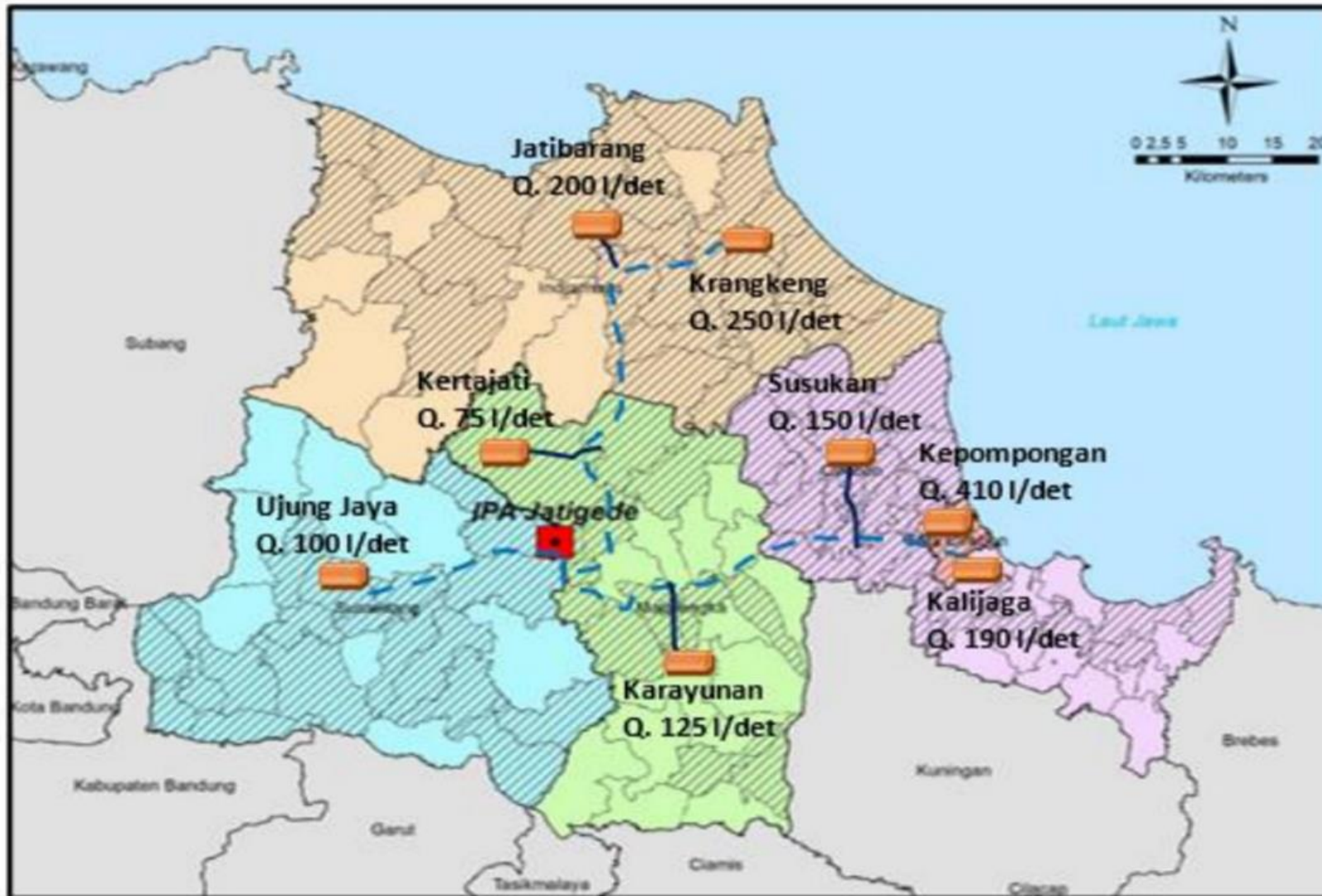




PROJECT STRUCTURE



PROJECT ILLUSTRATION



Kab. Indramayu – 450 lpd
Jatibarang, Silyeg, Juntinyuat,
Karangampel, Widasari, Krangkeng

Kab. Cirebon – 150 lpd
Gegesik, Kaliwedi, Arjawanangun dan
Ciwaringin

Kota Cirebon – 600 lpd
Harjamukti dan Kesambi

Kab. Majalengka – 150 lpd
Jatitujuh, Kertajati, Jatiwangi, Dawuan,
Kadipaten, Ligung, Sumberjaya,
Kasokandel dan Palasah

Kab. Sumedang – 100 lpd
Ujungjaya

BIJB – 50 lpd
Bandara dan Potensi Aerocity



PROJECT SCOPE

Development

Construction scope:

- a. Intake: reinforced concrete, 3 x 550 l/s pump cap
- b. System capacity: 1,650 l/s
- c. Bulk water sales: 1,500 l/s
- d. Transmission pipe: 151 KM, 1,500 l/s
- e. Water Treatment Plant: Reinforced concrete, 3 x 550 l/s capacity

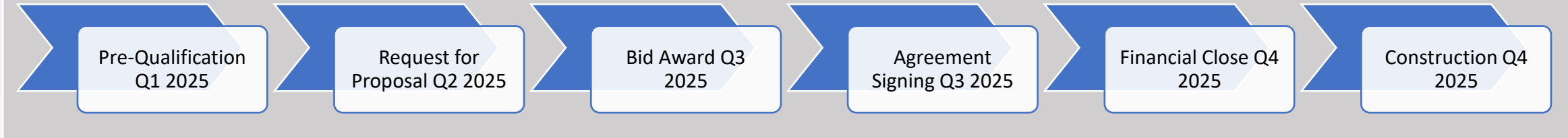
O&M and Transfer

- a. Operation and maintenance of all facility.
- b. Maintain the service quality of the drinking water development system according to the agreed standards.
- c. Transfer of assets and transfer of knowledge at the end of the cooperation period according to PPP Agreement



PROJECT SCHEDULE AND UPDATES

Indicative Project Schedule



Updates

- a. Current status : Finalized FBC and Tariff agreement
- b. Progress: West Java Provincial Government still discussed with PDAM Off-takers regarding bulk water tariff agreement
- c. Obstacles: PDAMs Off-takers willingness to pay is still under financially feasible tariff



THANK YOU

"Sukses Perencanaan Sukses Implementasi"

Jalan Ir. H. Juanda No.287, Dago, Coblong,
Kota Bandung, Jawa Barat | 40135

Telp : (022) 25 16065 | Fax (022) 2510731

Email : public@bappeda.jabarprov.go.id

 Bappeda Jabar  [bappedajabar](#)  [bappedajabar](#)  [Bappeda Provinsi Jawa Barat](#)

bappeda.jabarprov.go.id